



Bayswater Road, Bayswater, London, W2

£1,200 Per Week

FLEXIBLE RENTAL TERMS

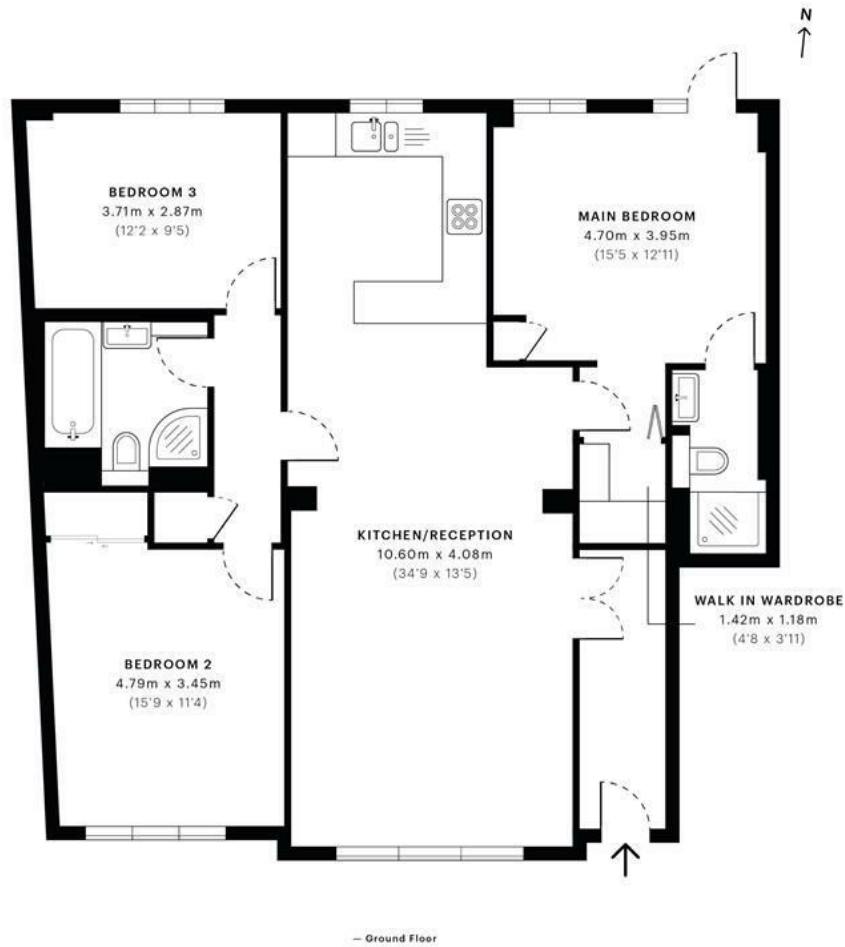
VIDEO VIEWING: This newly refurbished three bedroom, two bathroom apartment with gorgeous dual aspect entertaining space is situated in the highly sought after Caroline House.

This home has been designed to a high standard and includes wooden flooring throughout, master bedroom with en suite, two further large double bedrooms and a generously sized family bathroom. The apartment features in-house multimedia system allowing you to set the scene and operate your TV, lighting and blinds from a Creston Control Panel.

Offered furnished, suitable for Professionals and Students.

Caroline House is situated to the north of Kensington Gardens with park access directly opposite, leading down Broad Walk Avenue towards Kensington Palace and Palace Gate beyond. The building is located close to Queensway, approximately 480 meters from Kensington Church Street and approximately 960 meters from Kensington High Street, with many world renowned restaurants and shops nearby.

- LONG LET
- Three Large Double Bedrooms
- Two Luxury Bathrooms
- Modern Open Plan Kitchen
- Spacious Reception Room
- Smart Home Controls
- 24 Hour Concierge
- Facing Hyde Park And Close To Queensway And Bayswater Stations



GROSS INTERNAL AREA (GIA)
The footprint of the property
102.85 sqm / 1107.07 sqft

NET INTERNAL AREA (NIA)
Excludes walls and external features
includes walkways, restricted head height
96.26 sqm / 1036.13 sqft

EXTERNAL STRUCTURAL FEATURES
Balconies, terraces, verandas etc.
0.00 sqm / 0.00 sqft

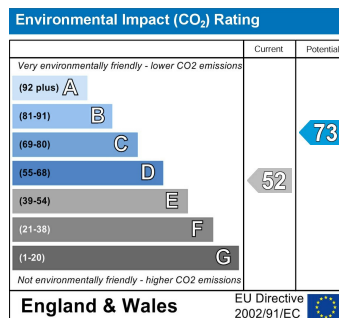
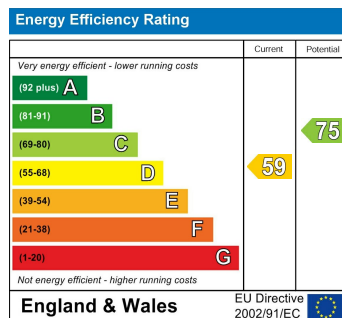
RESTRICTED HEAD HEIGHT
Limited use area under 1.5m
0.00 sqm / 0.00 sqft



Spec Verified floor plans are produced in accordance with:
Royal Institution of Chartered Surveyors' Property Measurement Standards.
Plots and gardens are illustrative only and excluded from all area calculations.
Due to rounding, numbers may not add up precisely.
All measurements shown for the individual room lengths and widths
are the maximum points of measurements captured in the scan.

IPMS 3B RESIDENTIAL 103.66 sqm / 1115.79 sqft
IPMS 3C RESIDENTIAL 98.10 sqm / 1055.94 sqft

spec id 5f563d784a3ae40dc22dc2bb



Admin fee: £ inclusive of VAT | Reference Fee: £ inclusive of VAT per application | Inventory Fee may also apply